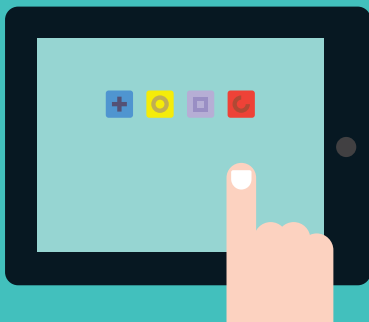




CLEVIR

Virtual Workspaces
for the Real World



Clevir Workspace Portal Product Description

The Clevir Workspace Portal offers a simple end user experience for hybrid cloud and on premise environments. Single sign on access to all applications from any device that supports browser based HTML5.

The portal is easy to deploy, secure and highly configurable, enabling the hosting provider to offer many choices of how to deliver the user experience. We allow users access to virtually any application on any device, at any time as well as central delivery, management and security of company assets across devices and user groups.

Features

Access to All applications:

- Static or Dynamic Desktop
 - Static and Dynamic remote app
 - Azure remote desktop & Azure remote App
 - Cloud Applications, including full integration of Office 365 and VoIP
 - Proxied App (Intranet)
 - Virtualized Applications on any location, websites
-

Administrative Features:

- Maintain user profiles, add/remove users (AD)
 - Access management of apps and services
 - Add, delete and edit applications
 - Icon Management
 - API to app stores, provisioning platforms and billing
-

Customization of workspace:

- White label option for partners/resellers
 - Centrally managed corporate standard lay-outs
-

Security features:

- Single sign-on
 - Support of RSA or Safenet security options
 - Multifactor and pin code Authentication
 - Token Authentication (RSA tokens, text message with token, key chain with token)
 - Certificate signed, based on Active Directory rights and profiles
 - User encrypted password store (G4)
 - SSL 1024 bit, 2048 bit and 4096 bit encrypted
-

End-user self service Protocol management:

- HTML5 to RDP and vice versa
 - Keyboard and mouse simulation
 - Cut and paste function between apps.
-

Connectivity Protocols:

MSTSC, Terminal Server, TS Gateway, RDSH (Remote FX) and HTTPS.

Configuration guidelines

Management:

Active Directory administrator access

Infrastructure:

- A windows 2012 r2 server. Domain member and accessible through internet.
This server configuration: 2 vCPU and 8GB memory. On this server the Workspace Portal will be installed.
- A second server is a pre-configured OVF.
This server configuration: 4 vCPU and 4GB memory with OS Ubuntu Linux. On this server we will install the HTML5 rdp converter.
- Above specifications will serve 1200 to 1500 users.



Service Providers USPs

1. Ability to push new application to end-users (cross- & upsell)
 2. Migration of client-server to cloud application without having to change the user experience
 3. Quick & easy to deploy a complete set of business applications to an organization
 4. Higher utilization of the datacenter
 5. No expensive licenses, hardware and implementation costs required from Citrix nor VMWare
 6. Available in any virtualised environment (VMWare/Citrix/Clevir)
 7. if so required, Clevir Cloudify engine can virtualise truly any legacy application
-

End user USPs

1. Only Clevir allows end-users to work easily between applications and move data (copy/paste) in between
 2. End-users can easily personalize their workspace
 3. Access from any device and anywhere
 4. End-users can access all cloud & non cloud applications in a single UI
 5. New applications can be pushed to the end user based on the end user profile
-

For more information about
our products, please
go to clevirsolutions.com